

EVANS ROOFING CASE STUDY

810 East Drive Apartment Building

Project Location

810 East Drive
Oklahoma City, Oklahoma

Building Representative

Jack Chamberlain, Building Owner

Project Date

February 2017

Roofing System

VersiFleece® TPO

Ideal for re-roofing or new construction, VersiFleece TPO incorporates all the benefits of VersiWeld reinforced TPO membrane with the additional benefits of a non-woven polyester fleece backing offering unmatched durability, puncture resistance and reflectivity.

Warranty

20 year manufacturers material warranty

10 year labor warranty



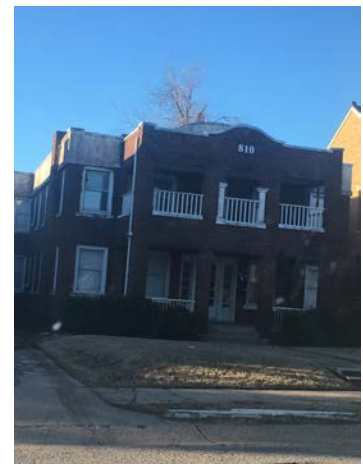
The Project

The apartment building at 810 East Drive in Oklahoma City is located in the historical Lincoln Terrace Neighborhood in Oklahoma City's Medical Research District. The building was purchased by an

Oklahoma City real estate developer with the intention of renting to medical students at the nearby university.

The Challenge

The structure had one layer of hot mopped modified bitumen membrane. The roof had been long overdue for re-roof. Additionally, the front roof over the second floor walk out balcony was in a state of disrepair due to leaking. The through the wall scuppers had deteriorated, thus there was extensive decking substrate damage. Furthermore, the wall flashings were installed incorrectly and needed counter flashing.



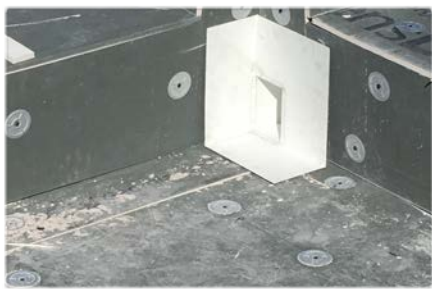
The Solution



First, we did a complete tear off of the roof over the second floor balcony. We removed and replaced all damaged decking. Then we installed 1/2" DensDeck roof cover board. Mechanically fastened with Versico screws and pressure plates. 1 plate per 2 square feet.



We installed VersiWeld 60 mil TPO fully adhered to the roof over the second floor balcony, installing new custom made through-the-wall scuppers and new wall flashing details including custom counter flashing.



Finally, the main roof we installed VersiFleece 115 mil TPO adhered utilizing Dash A & B low rise foam adhesive. All TPO terminations at roof perimeters and parapet walls mechanically fastened using Versico screws and pressure plates (with grip teeth at 12" spacing).



We installed architectural 26 gauge 4" x 4" metal edge with Versico cover tape.

